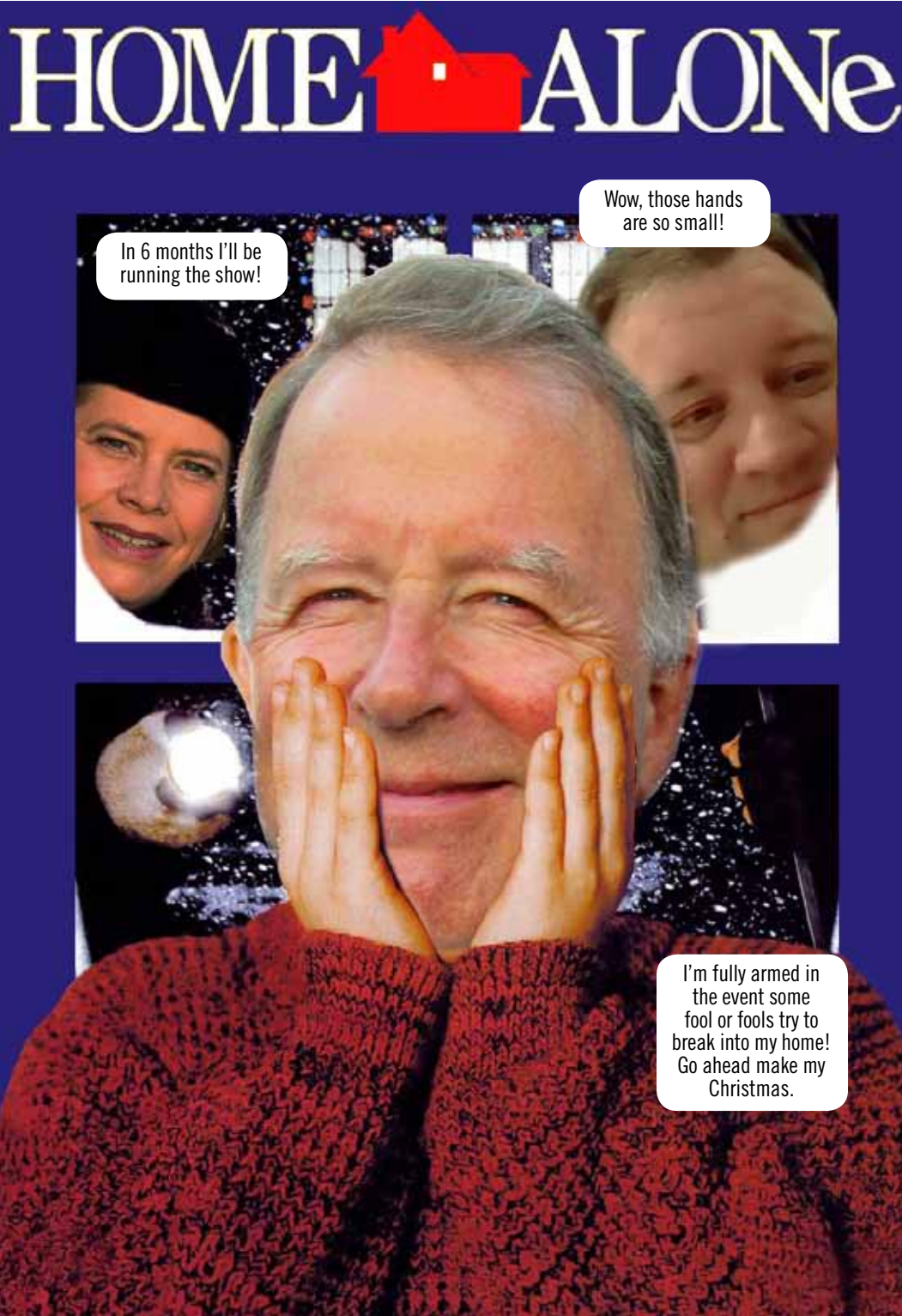




Beverly Rotary Club Sprocket Newsletter

Dec 10, 2020
Issue 24



BLOCK BUSTER HIT OF THE YEAR

A movie so big it has everything!

- Isolation jitters
- Pandemic scourge
- TP shortages
- No gatherings
- No bar hopping
- No huggies
- No live music
- No S&#T!

Watch in awe as President Marshall runs a club without having even one meeting at NYC. The chicken dinner lobby rejoices in the restrictions.

Pay for lunch, happy dollars, or just a good old donation. Keep the dream alive
<https://beverlyrotaryclub.ejoinme.org/MyEvents/COVIDRESPONSE/tabid/1143470/Default.aspx>



**Say goodbye
to 2020 in style
with our new
Burn it Down,
Live it Up
RAFFLE!**

2020 has been a most unusual year and we here at the Rotary are glad it's almost over. To celebrate the end of 2020 we are having a Raffle with a FABULOUS gift pack (Value \$400) including:

TO CELEBRATE WITH YOUR OWN PERSONAL POD

- New Year's Take out Dinner for Two from Frank on Rantoul St
- Bottle of Bubbly
- Party favors to celebrate NYE
- and many other positive vibes gifts

**ONLY \$25
per ticket**

TO BURN AT A FIRE PIT OF YOUR CHOICE

- Toilet Paper or trade for \$\$\$
- Masks and PPE or trade for \$\$\$
- COVID memories not worth remembering
- Plus other rotten things that happened this year

<https://beverlyrotaryclub.ejoinme.org/MyEvents/BURNITDOWNLIVEITUP/tabid/1200215/Default.aspx>

Let's send off 2020 with a hearty and healthy farewell!!!

MCJ
Insurance Agency, Inc.

Michael C. Jones
President

www.mcjins.com

Phone 978-338-4670 409A Cabot Street
Fax 978-522-8388 Beverly, MA 01915
Mobile 978-828-5822 mike@mcjins.com

Desjardins
JEWELERS

978-922-2149

Commodore Plaza,
47 Enon Street
Beverly, MA 01915-3601

TEMKIN
FINANCIAL GROUP, LLC

 **Alan L. Temkin**
Financial Planner
781-876-4175
atemkin@temkinfinancial.com

www.temkinfinancial.com
301 Edgewater Place, Suite 200
Wakefield, MA 01880

Alan L. Temkin is a registered representative of and offers securities, investment advisory and financial planning services through MML Investors Services, LLC. Member SIPC. Temkin Financial Group, LLC is not a subsidiary or affiliate of through MML Investors Services, LLC, or its affiliated companies. 200 Clarendon Street, 19th and 25th Floor, Boston, MA 02116. 617-585-4500. CRN202111-256179

 **The leading provider of custom-designed workforce training programs.**

NORTH SHORE COMMUNITY COLLEGE
Corporate Training SOLUTIONS *Train your people. Transform your company.*

Dianne Palter Gill, Ed.D.
978-236-1225
dpalterg@northshore.edu
corporate.northshore.edu

STERLING
INSURANCE AGENCY, INC.

Established in 1929 & Still Growing!
Auto • Home • Business • Health • Life

Richard F. Mooney Jr.
president

306 Cabot Street, Beverly, MA
(978) 922-6600

Last weeks news, Tuesday Dec 3.20

Meeting was called to order:
by Marshal at the Rotary Palace
Room 12:16 pm

Pledge of Allegiance was led by Sarah
, followed by _ leading us in song and
an invocation led by Dianne American
Performed my America" My Country Tis
a Tee.

"Happy Birthday" was sung so we are
saving it for next time!
Bob Butterworth
Susan Osborne December 9th

The following were guests of the Beverly Rotary club:

Barry Sullivan from Arizona
David Edwards Guest of Brian Murphy
Mixie Grace

Announcements:

Bell Ringing Spots: we have room still
open, most of slots are taken, they need
two people for four pm at Shaw's. One
at 4pm at Stop and shop.

Fundraising meeting is next week.
End of the year raffle.

Sergeant-at-Arms President Elect Diane is Sergeant....

Happy dollars and announcements:

Joe Broderick had all of Students come
back after Thanksgivings no Cases.
Rachel Hand from Family Promise: Brian
Murphy, Sue Gabriel, Andy Goldberg

Thad Siemasko: Celebration of 100 An-
niversary of Birthday. Streamed concert
tonight! Grace Potter will be performing
tonight from Vermont!

Brian Murphy: was going to say some-
thing but had technical difficulties...
Welcome to David who is from Endicott
looking to be a member and Ellen who in
New Grandmother to Ella!

Bob Murphy: Saw the Cabot and was
amazed at the restoration! Looks amaz-
ing~

Diane is sharing her screen on The Turkey
Wing! This was last year video but is still
just as funny this year. There is no raffle
this year!

Anyone in Video can pay \$5, Maureen
is paying Double. Bob Murphy can pay
\$10 because he directed the show!

Guest Speaker / Program:

Ann Curry will tell her about herself in

her classification speech.

- She had a beautiful presentation that she shared her screen.
- From Gloucester....youngest of 8 children.... Enjoyed her childhood and living in Gloucester! Now lives in Beverly...
- She attended Salem State, Northeastern, Science teacher, girls Tennis coach....
- 21 years Married with John Curry.....
- Zach Curry, great time at BHS School, Represented Miaa meeting for the Schools. At Johnson Wales, studying Business and Running Track....
- Hosted exchange students... Maria... Danish Family.... Very Impactful.
- Hunter her dog
- Book Group
- Gardening!
- Works for YMCA for NORTH SHORE: Stem Integration and Curriculum Specialist.... Academic and technology camps....

Stem Horizons; Beverly Middle school Girls in Science... Meet female Scientist.... See presentation. Learn and use equipment, Field Trips...

Anne is committed to the community...and her public service is Inspiration to all of us

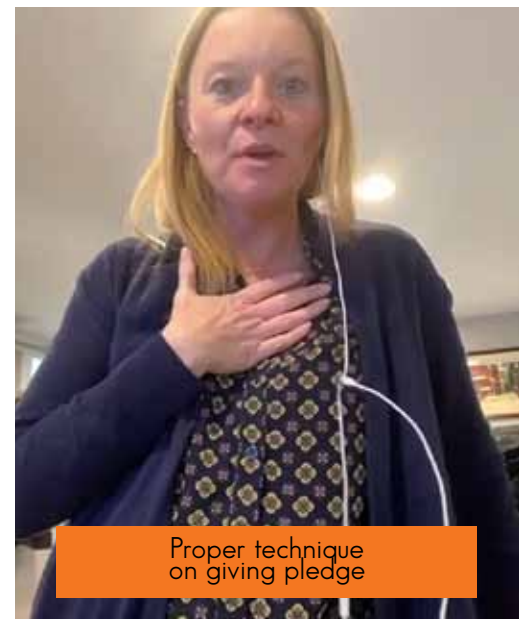
Meeting Adjourned: 1:10 PM

Upcoming Raffle: The theme is BURN IT DOWN. LIVE IT UP! ...goodbye 2020!

Diane Howard.... Raffle fundraiser, to send out 2020 Frank is doing a special menu and Dinner

This is Brian Murphy's Brain child!

SCRIBE
Lisa Marciano



True to our Communities



We are proud to support the
Beverly
Rotary Club

Eastern Bank

Last weeks Speaker

Anne Curry, not to be confused with Ann Curry from NBC gave a delightful classification speech last week. Her experiences in life, love and education. If you have a garden that needs some loving, WHO YA GONNA CALL? Anne Curry, she'll take care of your weeds. At right Anne praying for a mild winter and early growing season.



Turkey Wing Recap

Pictures tell a 1000 words. Let's stop at 9.



Matthew H. Piaker,
JD, LLM, AIF®

Tel: 978-927-3123
Email: mpiaker@cfaemail.com
100 Cummings Center, Ste. 207P
Beverly, MA 01915
www.capitolfinancialadvisors.com



Securities and Advisory Services offered through Commonwealth Financial Network, Member FINRA/SIPC. Advisory services offered by Capitol Financial Advisors, a registered investment adviser, are separate and unrelated to Commonwealth.

Montserrat College of Art

where creativity works®

visual art & design education
continuing education for all ages
public art galleries

beverly, ma | montserrat.edu

Helping Local Businesses Thrive.

To contact one of our commercial lenders call (978) 573-1300 or visit northshore-bank.com/lenders.

NORTH SHORE BANK

Well north of your expectations.™
northshore-bank.com | [f](#) [t](#) [@](#) [i](#) [n](#) [s](#)

Member FDIC Member DIF Equal Housing Lender

Eagle Strategies LLC



Edward F. Cahill, J.D., CFP®, CLU®, ChFC®
Financial Adviser

(978) 927-9352 • 306 Cabot Street, Beverly, MA 01915
ecahill@ft.newyorklife.com • www.edwardfcachill.com

Agent, New York Life Insurance Company.
Registered Representative, offering securities through NYLIFE Securities LLC,
Member FINRA/SIPC, a Licensed Insurance Agency
201 Jones Road, Fifth Floor, Waltham, MA 02451 • Tel: 781-647-4100
Eagle Strategies and NYLIFE Securities are New York Life Companies



How about a nice punch in the mouth!

Worldwide Adventures of Handly

Hi ho ho ho, fellow Ro's! You can bet the elves at HANDLY LEGAL BOUTIQUE ("Bespoke Lawsuits for your Holiday Pleasure") are working full time on BURN IT DOWN, LIVE IT UP! All of which reminds me of a certain New Year's Eve back in 1999 - the eve of a new century! I was surfing on Kauai, resting up before the 21st century ushered in a swarm of malpractice suits against manufacturers who had failed to update their hard drives. It was predicted that computer clocks around the world would fail to reset to 2000, disabling planes in mid-air, power grids in mid-kilowatt, elevators mid-floor, and food processors mid-smoothie. The world would revert to Stone Age conditions: darkness, cold, and isolation around the globe! I know, I know, in the comfort and security of 2020 (GAWK! See what I did there?), this turn-of-the-millennial prediction seems like folklore but it was real concern. As I was slurping my Breadfruit smoothie on the lanai, the local fire chief urgently asked my opinion, "Solicitor Handly, will the island fire truck still work tomorrow or will it be frozen in obsolescence?" I sat bolt upright in my hammock, stunned by the enormity of his request. FROZEN OBSOLESCENCE! By God, there was the name for a 21st century rock band if ever there was one. I fired up the fax machine and registered the trade mark immediately. Good thing too. The computers didn't crash January 1st and the malpractice suits never materialized. Unfortunately "Frozen Obsolescence" never caught on. Your average rock musician might master an Am9 chord but could never get a handle on the two c's required in "Obsolescence". But enough about me (I said never), come and join us in wringing out this soggy malassada of a year and buy your tickets for BURN IT DOWN, LIVE IT UP! Aloha!

Handly

SHUKA Associates Inc.

Real Estate Appraisal, Appraisal Review & Consulting

John A. Shuka, MAI, SRA, AI-GRS

8 Enon Street, Suite 1B
Beverly, MA 01915
978-921-1700

www.shuka-associates.com

CCI Reprographics

A Full Service Copy Center
AV Rentals & Services

Serving Beverly Since 1979

Alex Ushakoff III - owner
4th generation Rotarian

110 Cabot Street 978-922-3773
Alex@CCIREpro.com



Good Food, Drink & Fun
241 Jefferson Ave. Salem MA
www.tinwhistlesalem.com • 978-741-1912

Beverly Insurance

100 Cummings Center
Suite 106N

Personal and Business
Insurance

978-524-8501
email:mike@beverlyins.com



Keep your facility clean and disinfected with
JAN-PRO of Northeast Massachusetts.

WE SPECIALIZE IN CLEANING & DISINFECTING:

- Office Buildings
- Medical Facilities
- Daycares and Schools
- Restaurants
- Auto Dealerships
- ...and more!

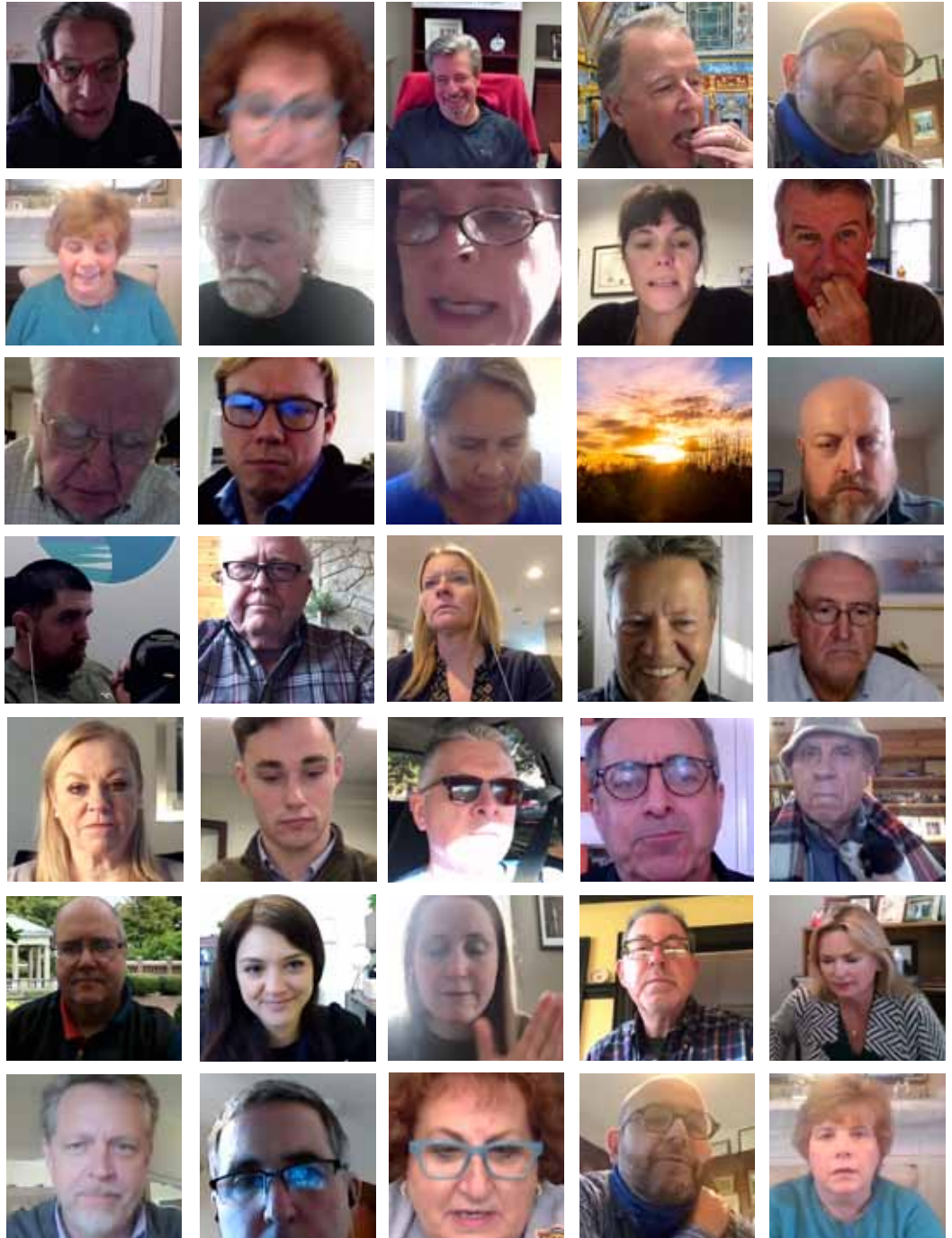
CALL FOR A FREE ESTIMATE!

781-482-7990 | JAN-PRO.COM/MASS



Zoom with Beverly Rotary

A visual record of last weeks attendees. See if you can find the proposed new member? See if you can see who is eating, see if you can find this weeks two-fers Thad, Jackie and Sue G. Plus a Matt Piaker sunset instead of real Matt. And a four legged friend from Yaffa.



Walter W Hartford, CFA
Financial Advisor

55 Market Street
Suite 102
Ipswich, MA 01938-2262
978-356-3002

Edward Jones
MAKING SENSE OF INVESTING
edwardjones.com



american family care®
URGENT CARE

50 DODGE STREET, BEVERLY MA 01915
978.922.2171 | AFCUrgentCareBeverly.com
450 PARADISE RD, SWAMPSCOTT, MA 01907
781.691.9366 | AFCUrgentCareSwampscott.com